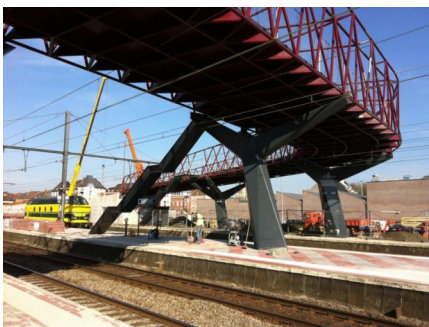
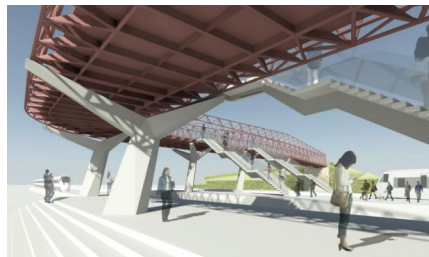
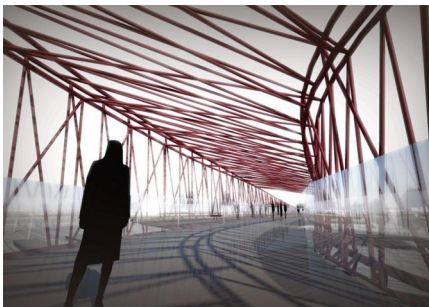
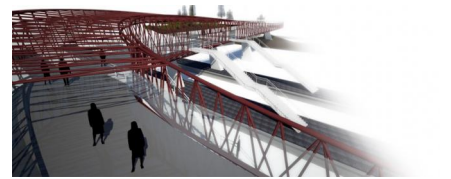
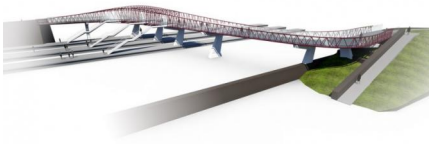
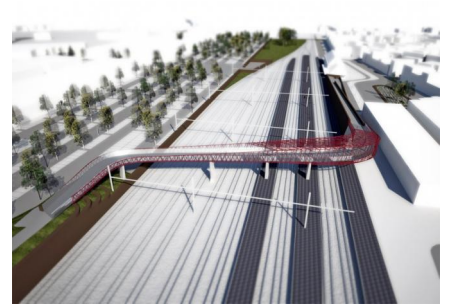
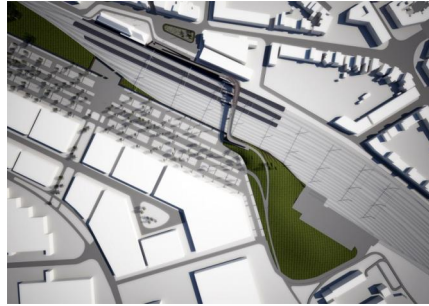


PEDESTRIAN BICYCLE BRIDGE AARSCHOT

2008, Aarschot, Belgium





The winning design of West 8 and BAS-Dirk Jaspaert for the new pedestrian bicycle bridge, that will span the rail tracks in Aarschot, focuses on the functional character of the bridge as well as on its potential to tempt and surprise its users.

The bridge will connect the different old and new parts of the city, the landscape and the centre with each other and becomes a crucial link within the regional bicycle path network. It also creates new access points to the platforms.

By virtue of its location, form, structure and the use of material, the bridge captures the qualities of the surrounding landscape. It offers cyclists and pedestrians a new rest and meeting place above the busy rail tracks, but at the same time it gives them a sense of security.

The steel space grid is supported by sculptural pillars and its curved shape offers a variety of constantly changing perspectives and experiences.

client

City of Aarschot

partners

BAS-Dirk Jaspaert, Snoeck en Partners

team

Adriaan Geuze, Maarten van de Voorde, Eduard Balcells, Pieter Hoen, Joost Koningen, Perry Maas, Nik Naudts, Matthew Skjonsberg, Andrew Tang, Ronald van Nugteren